

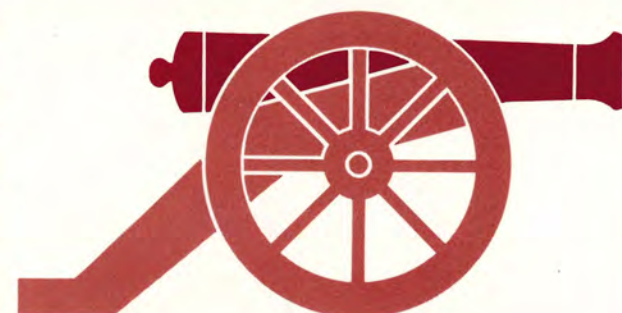
THE COLONIAL
Williamsburg
CONFERENCE CENTER



WILLIAMSBURG, VIRGINIA

THE COLONIAL WILLIAMSBURG CONFERENCE CENTER

WILLIAMSBURG, VIRGINIA



The map at left shows the Williamsburg Conference Center, hotels, and points of interest in Virginia's colonial capital.

EXHIBITION HOMES, SHOPS, AND PUBLIC BUILDINGS*

The Governor's Palace
 Brush-Everard House
 George Wythe House
 The Magazine and Guardhouse
 Raleigh Tavern
 The Public Gaol
 The Capitol
 Peyton Randolph House
 Wetherburn's Tavern
 Geddy House, Silversmith Shop and Foundry
 Blacksmith, Harness and Saddlemaker
 Spinning and Weaving
 Bootmaker
 Cabinetmaker
 Printer, Bookbinder and Post Office
 Milliner
 Jeweler and Engraver
 Apothecary
 Wigmaker
 Gunsmith
 Baker
 Miller
 Music Teacher
 Music Instrument Maker
 Basketmaker
 Cooper

PLACES OF INTEREST

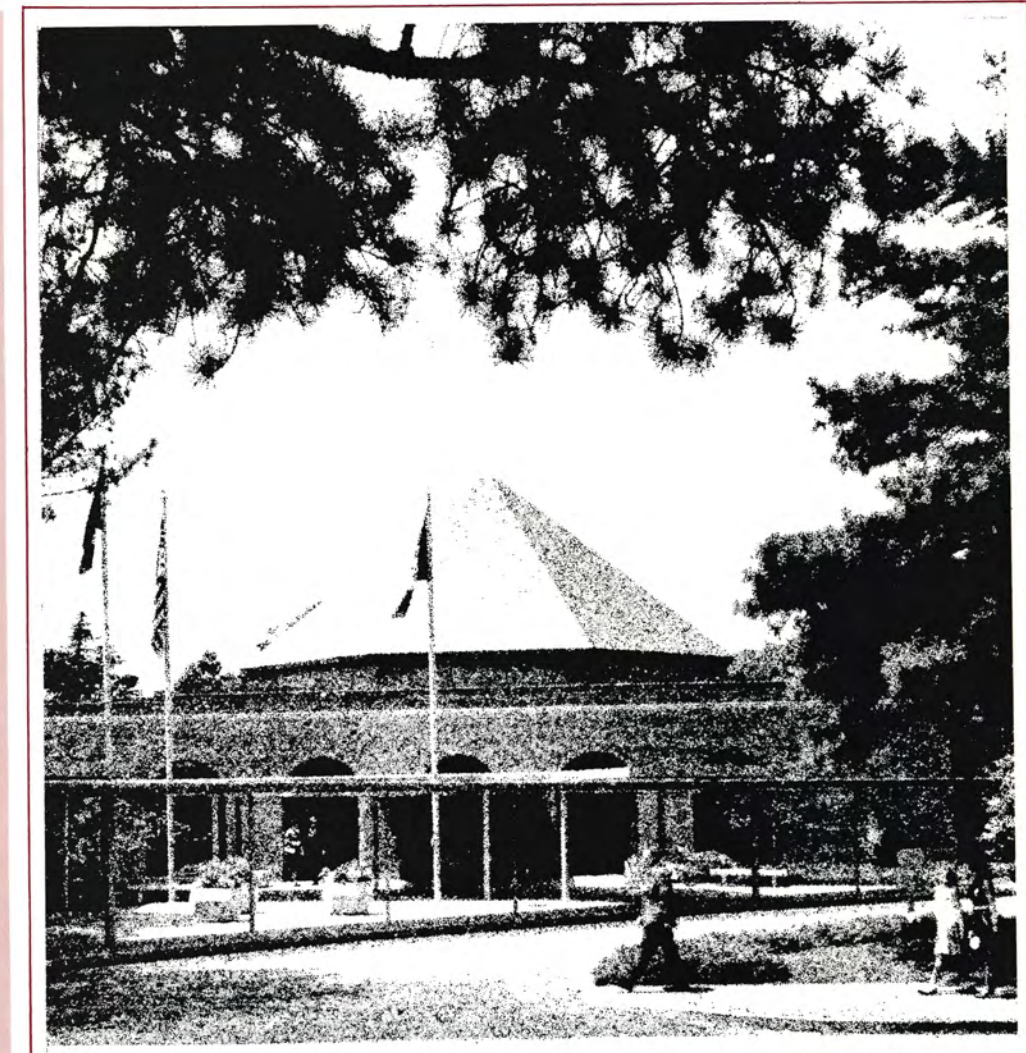
Bruton Parish Church
 Courthouse of 1770
 Abby Aldrich Rockefeller Folk Art Center
 Wren Building of The College of William and Mary

COLONIAL TAVERNS (DINING)

Josiah Chownings Tavern
 King's Arms Tavern
 Christiana Campbell's Tavern

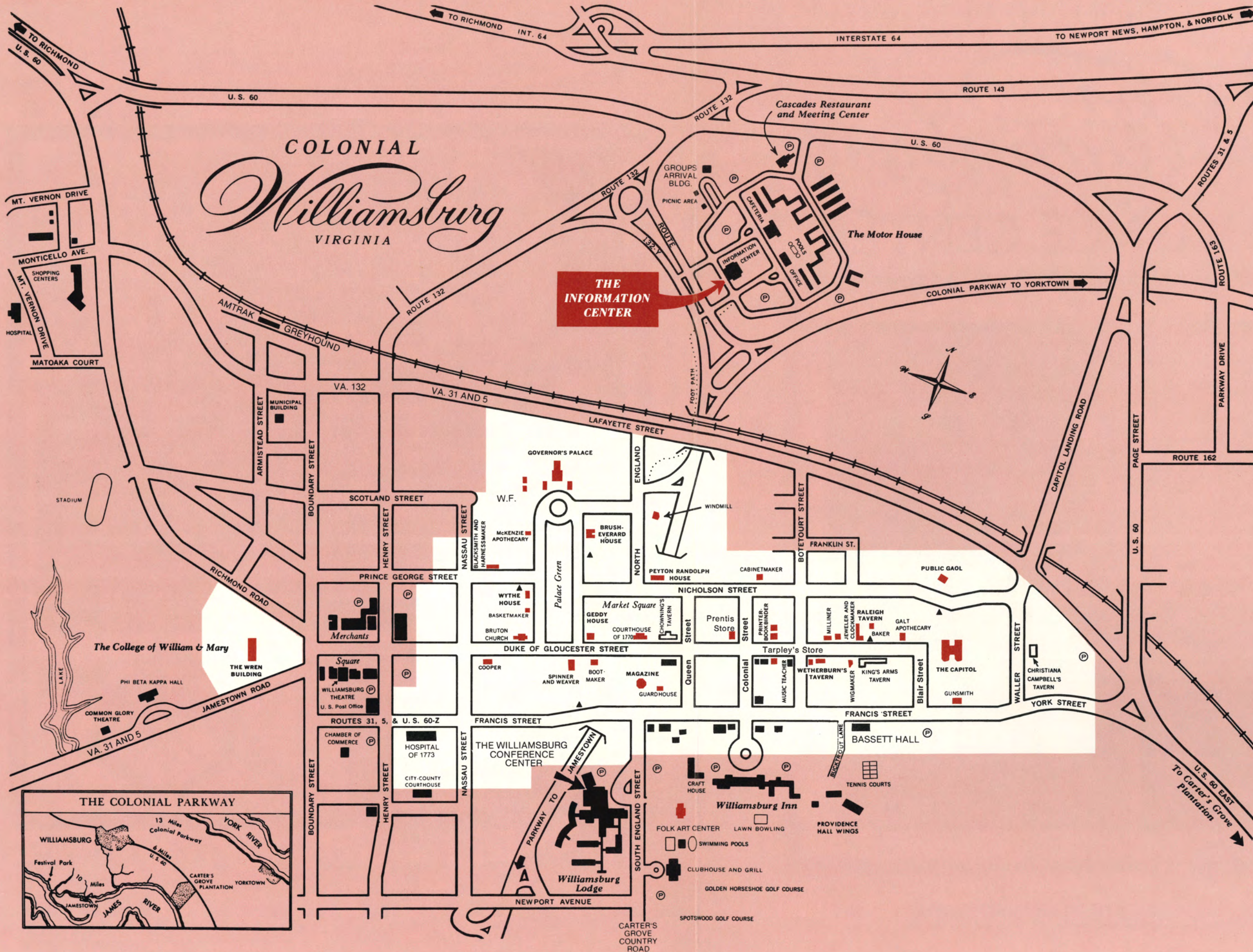
COLONIAL HOUSES AND TAVERNS

Market Square Tavern
 Brick House Tavern
 A number of other dwellings, kitchens, and shops in the Historic Area accommodate visitors to Williamsburg



THREE COLONIAL STORES

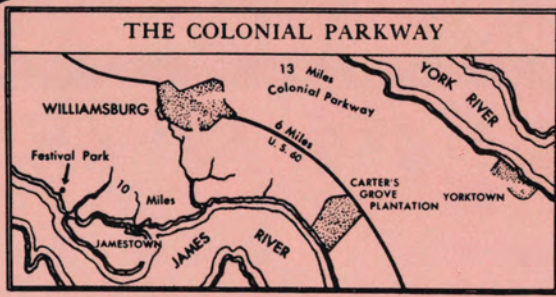
Three shops in the Historic Area offer for purchase items made for and by the Colonial Williamsburg crafts program. Additional sales items are offered by the silversmith, the jeweler, and the baker.



COLONIAL
Williamsburg
VIRGINIA

THE INFORMATION CENTER

- THE HISTORIC AREA
- PARKING AREAS
- VISITOR FACILITIES
- Exhibition Buildings
- COLONIAL DINING PLACES
- WATER FOUNTAINS



HISTORIC WILLIAMSBURG

Incorporated in 1722, historic Williamsburg is today a lively restoration of the busy and important capital city of colonial Virginia. Shops, taverns, public buildings, and countless private homes with their gardens and outbuildings are alive with reminders of that former day when this "green country town" was the political and educational center of Virginia and scene of "fashionable" social life. Balls, races, fairs, and other entertainment composed a social season in spring and fall not inferior, some English visitors of the period concluded, to that of London itself.

Colonial Williamsburg has restored some eighty-eight original buildings and metic-

ulously reconstructed others on original sites after exhaustive archaeological and architectural research. Of these, more than thirty exhibition homes, shops, and public buildings — furnished from one of the world's finest collections of English and American antiques — are open to the public. Costumed hosts and hostesses conduct visitors through major buildings and skilled craftsmen and women pursue ancient trades in colonial craft shops, using implements of their eighteenth-century predecessors. Surrounding and complementing the public buildings are almost one hundred gardens and greens.

The Wren Building at the College of William and Mary (dating from 1695)



1. Garden Dining
2. The Colonial Capitol
3. Formal Gardens
4. Governor's Palace

and Bruton Parish Episcopal Church (completed in 1715) are other venerable structures open to the public on a regular basis.

The past constitutes Williamsburg's past, its present, and its future. The eighteenth-century is mirrored in this showplace among colonial restorations.

PROGRAM OPPORTUNITIES

In Williamsburg, Virginians gave leadership to the long struggle of a liberty-loving people against privileged society. The House of Burgesses, in 1774, called for the First Continental Congress and later protested strongly the closing of the port of Boston. The Fifth Virginia Convention here on May 6, 1776, began the open move toward American freedom by declaring Virginia an independent commonwealth

and by instructing the Virginia delegation to the Second Continental Congress in Philadelphia to propose independence, leading to the July 4, 1776, declaration.

Here George Washington, George Mason, Patrick Henry, George Wythe, Thomas Jefferson, James Madison, and other great men helped to shape the foundations of American democracy. From them came Henry's defiant resolutions against the Stamp Act, Mason's enduring Virginia Declaration of Rights, the pioneering Virginia Constitution, and introduction of Jefferson's famous Statute for Religious Freedom.

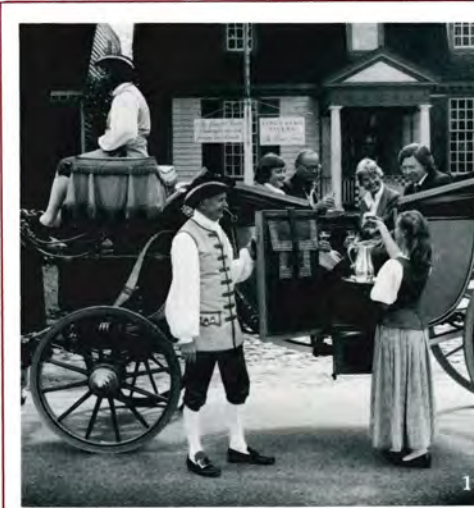
Williamsburg today is filled with the echoes of these men and their deeds.

Colonial Williamsburg provides a variety of tours of the old city and throughout the year a broad range of events helps thousands of visitors reach a new under-

standing of the contributions of these patriots. The large, comprehensive Colonial Williamsburg Information Center is the starting point for all visits to the mile-long, half-mile wide Historic Area.

Nearby are Jamestown, where in 1607 the first permanent English settlement in the New World began; Yorktown, site of the 1781 climactic battle of the American Revolution, and Carter's Grove plantation, one of the manor houses along the majestic James River. The College of William and Mary, National Park Service, and Jamestown-Yorktown Foundation sponsor many educational and cultural events and upon arrangement supply resource personnel for meetings.

Williamsburg offers professional, educational, business, and cultural organizations a distinguished and unusual setting for a meaningful conference.



1. Ride in a Colonial Carriage
2. Climbing a Greased Pole
3. An Escorted Tour
4. Making Candles
5. Yorktown's Battlefield
6. Jamestown: The Three Ships

THE COLONIAL WILLIAMSBURG CONFERENCE CENTER

The Colonial Williamsburg Conference Center was designed for top-level meetings. Completely air-conditioned, soundproofed, and equipped with the finest communications and audiovisual facilities, its sixteen meeting rooms — 30,000 square feet of floor space — can meet the most exacting conference requirements.

The Conference Center is part of Williamsburg Lodge, with two hundred guest rooms, spacious lounge, dining room,

coffee shop, and swimming pools.

Adjacent to the Conference Center is the famous Williamsburg Inn, plus its Colonial Houses and Providence Hall guest rooms and suites — a total of 220 rooms — luxurious dining rooms, lounges, and terraces, swimming pools, and two outstanding golf courses. The eighteen-hole Golden Horseshoe course, designed by Robert Trent Jones, is of championship caliber; its companion, the Spotswood, is an ideal nine-hole

course.

The Motor House is located just north of the Historic Area. Its has 314 guest rooms, a cafeteria, restaurant, lounges, and three swimming pools.

The Cascades Meeting Center, at The Motor House, will accommodate groups of up to two hundred persons, and offers a high degree of flexibility that will meet the needs of the most demanding schedules.



1. The Williamsburg Lodge
2. Williamsburg Inn
3. Cascades Meeting Center

4. A Colonial House
5. The Motor House

THE VIRGINIA ROOM



The terraced Virginia Room provides an outstanding setting and environment for important meetings and banquets. Receptions may be held on the upper level, with dining and dancing a few steps below on the lower level.

With handsome cypress paneling and gold carpet, it is an elegant location for a banquet, reception, or meeting. It can be readily adapted for lectures, films, and theatricals. Superior electronic equipment is permanently installed for projection, recording, television, and sound and lighting control.

The Virginia Room will seat 650 persons for films, lectures, and dramatic presentations.

For international meetings, the Virginia Room is easily adapted for use of simultaneous language translation equipment.

Sessions of the continuing educational and cultural Williamsburg Forum Series of conferences and seminars sponsored by Colonial Williamsburg regularly utilize the Virginia Room. It has been the setting for the Southern Governors Conference, CBS Radio Network Conference, and Aerospace Industries Association Board of Directors Meeting among many other outstanding organizations and business and professional groups.

WILLIAMSBURG LODGE and CONFERENCE CENTER	THEATRE	CLASS-ROOM	BANQUET	CONFERENCE	RECEPTION	SIZE IN SQUARE FEET	DIMENSIONS IN FEET
Virginia Room	330	200	240			3136	56x56
Lower Level and Perimeter	650	360	520		800	7744	88x88
Combined with Room B	850		700		1300	9078	

AUDITORIUM



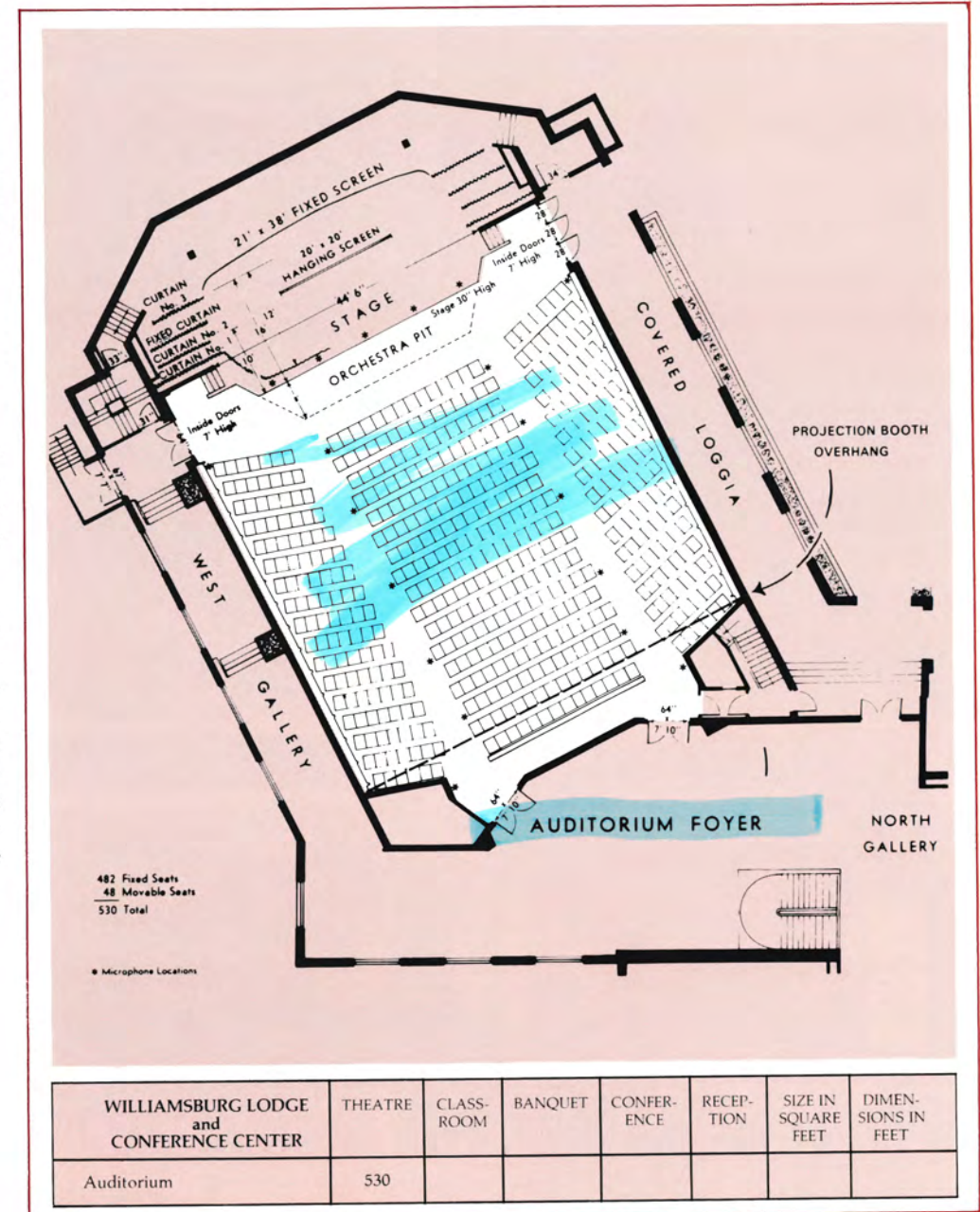
The meeting planner with a requirement for theatrical-type programming will find that the auditorium adds yet another dimension to the Williamsburg Conference Center.

Accommodating five hundred in comfortable theater-style seats, with writing arms, the auditorium is complete with the latest stage, sound, lighting, and projection equipment.

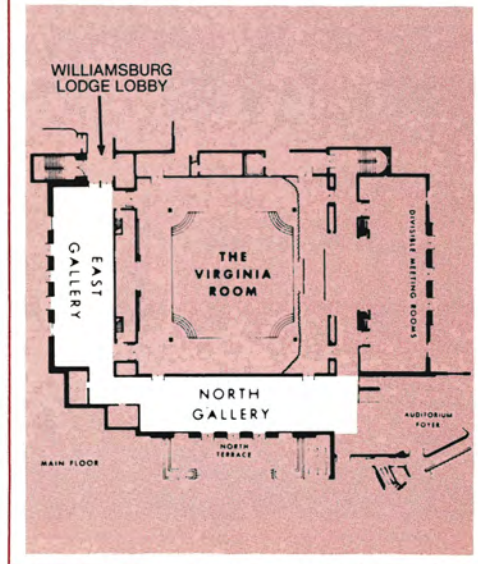
The handsome stage ideally accommodates lectures, plays and dramatic productions, concerts, movies, slide presentations, and related events.

Special attention has been given to acoustical performance. A controllable sound absorbent curtain, concealed in the side walls, permits adjustments to provide the desired sound quality.

Two screens may be used for projection. One is fixed (21 x 38 feet) and the other (20 x 20 feet) lowers from the ceiling. Projection equipment includes 35-millimeter twin film projectors with six-channel sound, a 16-millimeter film projector, and multi-purpose slide projector. Microphone connections are located throughout the stage area and there are a dozen different floor locations to permit audience participation.



EAST GALLERY AND NORTH GALLERY



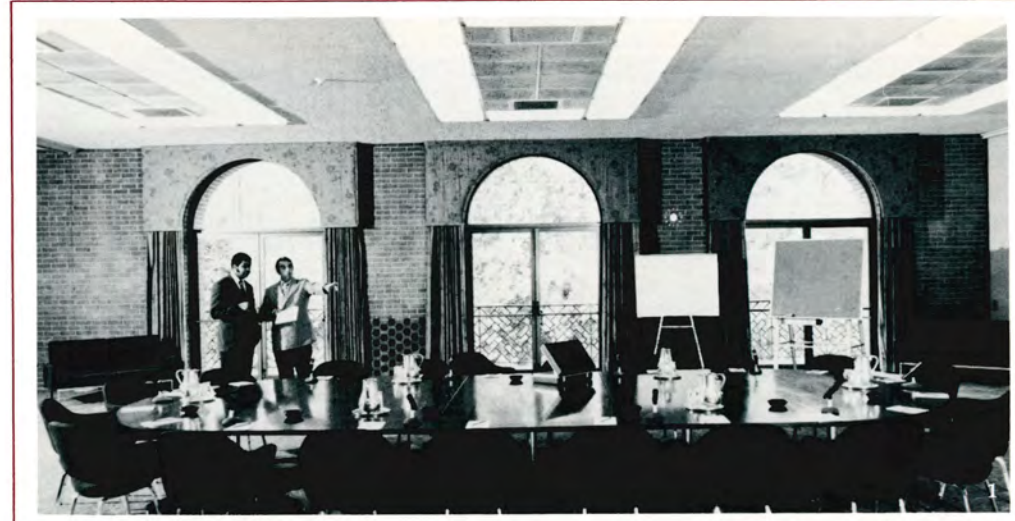
The East Gallery, with its sophisticated colors and changing exhibits, is a convenient registration area for conference groups. It is the main entrance to the Conference Center and joins the lobby of Williamsburg Lodge.

The North Gallery is ideal for distinctive receptions and teas. They may be used together for gatherings of up to six hundred people.

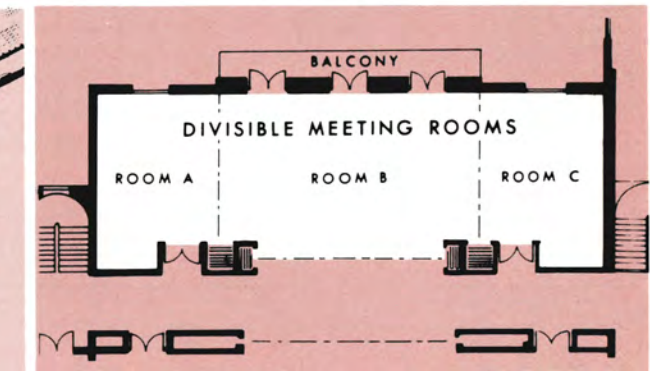
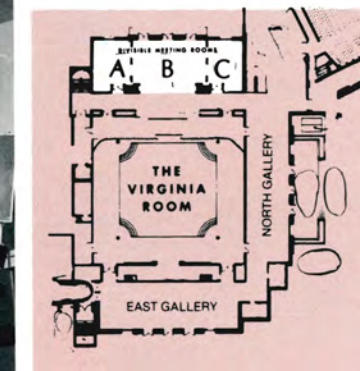
DIVISIBLE MEETING ROOMS A, B, AND C

Rooms A, B, and C, overlooking the tree-lined Colonial National Historical Parkway, are large and handsome rooms for meetings and parties. Retractable walls divide the three rooms.

The walls between Room B and the Virginia Room can be retracted to provide deep staging for shows or for additional seating for the Virginia Room.

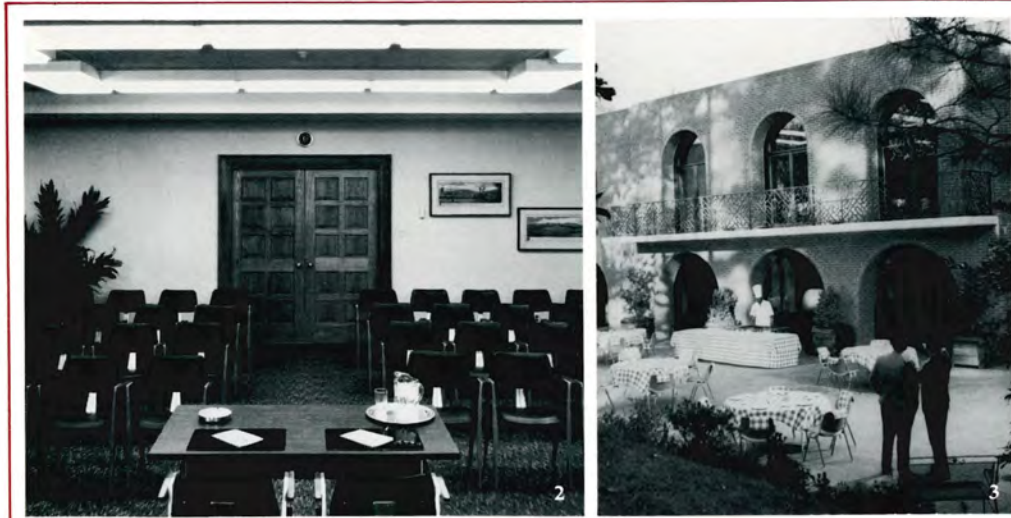


WILLIAMSBURG LODGE and CONFERENCE CENTER	THEATRE	CLASS-ROOM	BANQUET	CONFERENCE	RECEPTION	SIZE IN SQUARE FEET	DIMENSIONS IN FEET
Room A or C	55	35	48	26	50	630	21x30
Room B	130	90	100	50	120	1305	45x29
Combined A and B	185	125	148	70	170	1935	66x30
Combined B and C	185	125	148	70	170	1935	66x30
Combined A, B, and C	240	160	200	85	220	2565	87x30
North Gallery					400	1920	80x24
East Gallery					200	2352	84x28



1. Room B
2. Room C
3. East Gallery
4. North Gallery

MEETING ROOMS D, E, AND F AND WEST TERRACE

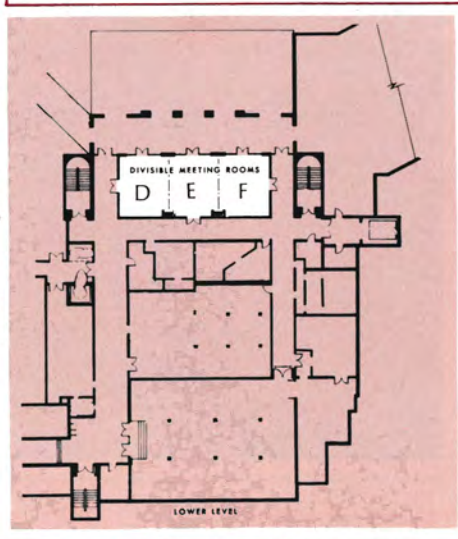


WILLIAMSBURG LODGE and CONFERENCE CENTER	THEATRE	CLASS-ROOM	BANQUET	CONFERENCE	RECEPTION	SIZE IN SQUARE FEET	DIMENSIONS IN FEET
Room D, E, or F	50	30	40	25	45	594	27x22
Combined D and E	100	60	80	50	90	1188	44x27
Combined E and F	100	60	80	50	90	1188	44x27
Combined D, E, and F	150	90	120	75	135	1782	66x27
West Terrace-Loggia			250		500	5104	88x58
Tidewater Room	260	185	220	80	300	3476	79x44

Rooms D, E, and F offer the conference planner a variety of arrangements.

Divided by retractable walls, this suite may be used as one large meeting room of 1,782 square feet, as three equal rooms of 594 square feet each, or as one room of 1,188 square feet and one room of 594 square feet.

This versatile suite opens upon the spacious Loggia and West Terrace, where receptions, teas, and dinners of unusual charm may be planned on occasions when an outdoor setting is desired. The West Terrace affords a lovely view of the Colonial National Parkway and landscaped property owned by the Custis family during the colonial period.



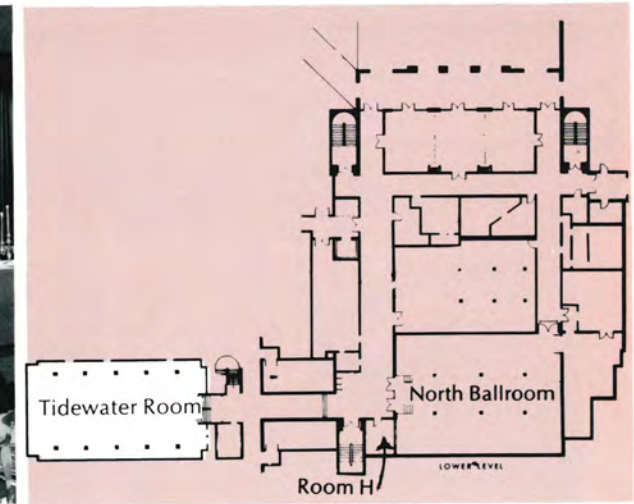
THE TIDEWATER ROOM

The Tidewater Room is tailored for medium-sized executive or social gatherings.

Dances, receptions, and banquets are unusually festive in this charming room, decorated with motifs recalling Captain John Smith's Chesapeake Bay country explorations in the seventeenth century.

Theater curtains and a motorized projection screen easily convert the room into a place for meetings, shows, films, and lectures.

Exhibits can be effectively displayed in this spacious area, which has an excellent system of spotlights and electrical circuitry.



1. Rooms D, E, and F
2. Room F
3. West Terrace
4. Tidewater Room
5. Ship motif in Tidewater Room

NORTH BALLROOM AND ROOM H

A superior exhibit hall, the North Ballroom has ample space for twenty-eight 8' x 10' display booths and may be combined with the Tidewater Room for a total of fifty booths.

In addition, the North Ballroom may be used for banquets and receptions or for meetings and lectures.

Room H serves as an additional facility for an executive session or can be used as a conference headquarters office or press room.



1. North Ballroom
2. Room H
3. North Ballroom for Banquet

WILLIAMSBURG LODGE and CONFERENCE CENTER	THEATRE	CLASS-ROOM	BANQUET	CONFERENCE	RECEPTION	SIZE IN SQUARE FEET	DIMENSIONS IN FEET
North Ballroom	350	220	310	70	475	3888	72x54
Room H			10	10	10	234	18x13

PROGRAM OPPORTUNITIES

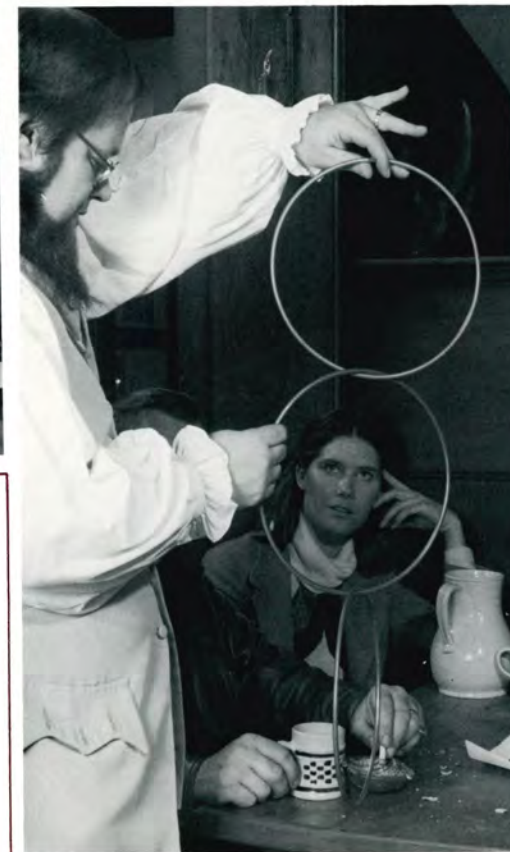
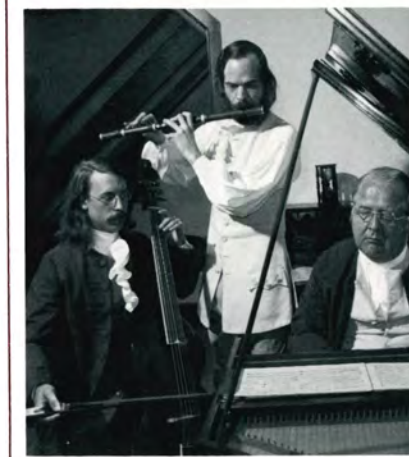
Because of the cultural and historical resources available, the planner will find an almost endless number of program ideas at Williamsburg Conference Center. Tours of the Historic Area may be specially tailored to suit the interests of the

group. A number of speakers are prepared to present Williamsburg and its role, past and present. Resource personnel from the College of William and Mary, Institute of Early American History and Culture, and National Park Service are

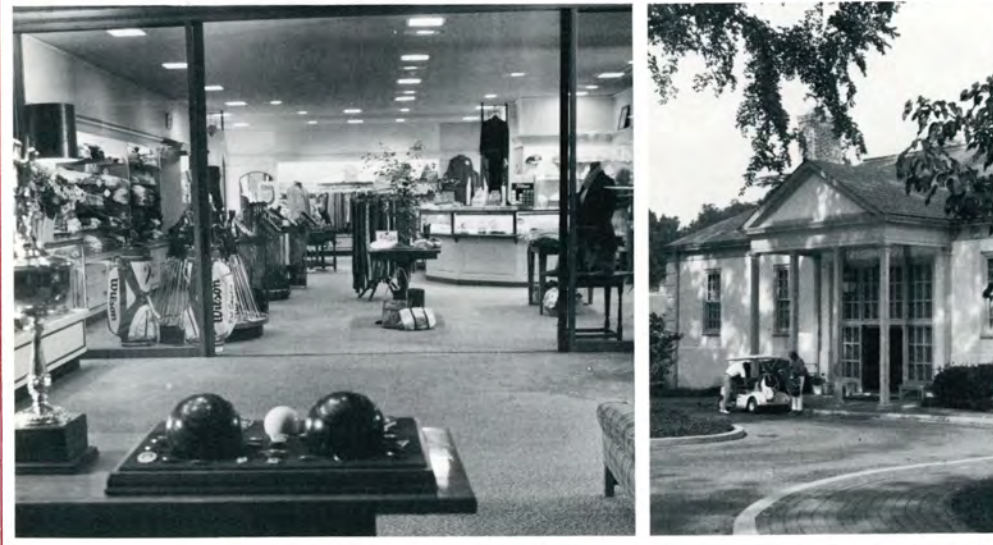
available upon arrangement. The list is lengthy and complete.

Banquet programs take on added interest when entertainers perform by candlelight in the manner of colonial Virginians. Instrumental and vocal programs, madrigal singers, chamber groups, and actors and actresses provide delightful interludes that are in keeping with Williamsburg's ancient themes.

Spouses delight in workshops on colonial crafts or eighteenth-century floral arrangements.



THE GOLDEN HORSESHOE GOLF COURSE



Sports-minded conferees will find complete facilities in Virginia's colonial capital.

Golf on two fine courses, swimming in outdoor pools, tennis on eight courts, bicycling, shuffleboard, croquet, and lawn bowling are popular.

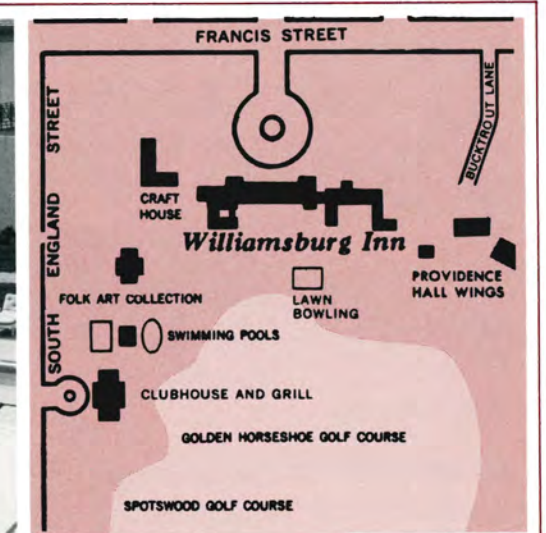
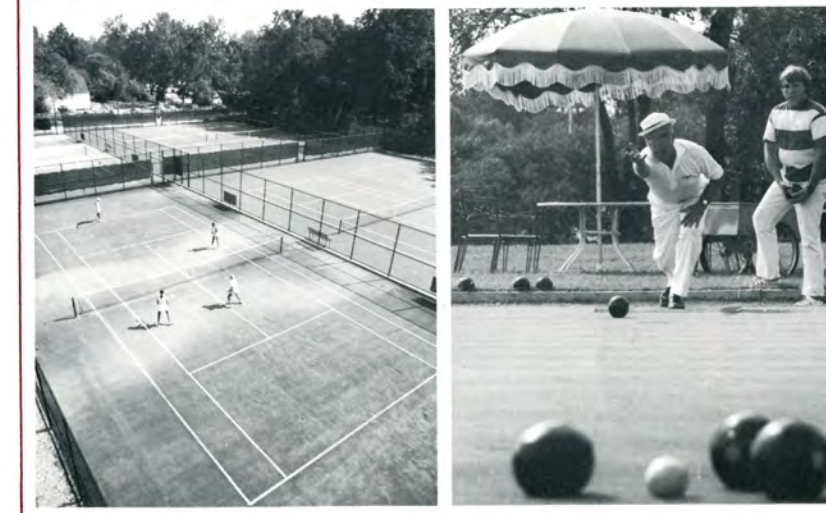
Golf architect Robert Trent Jones has created one of the finest courses in the country on the grounds of Williamsburg Inn and adjacent to Williamsburg Lodge. The Golden Horseshoe Golf Course is set in 125 wooded acres.

It measures 6,743 yards from championship tees and has a par of 71, with challenging fairways, large contoured greens, five scenic lakes, rolling hills, and gentle slopes. Number 16, with elevated tee and island green, has become one of this country's most famous golf holes.

Supplementing it, the nine-hole Spotswood Course provides an interesting round of golf for the conferee with limited time. Measuring only 1,885 yards, with a par of 31, the Spotswood Course has a par-5 and two par-4 holes to favor the long hitters.

The Clubhouse provides a completely equipped golf shop, spacious locker and dressing rooms, cocktail lounge, and a grill.

OTHER SPORTS



WILLIAMSBURG LODGE

Williamsburg Lodge, located a few steps from the Historic Area, has comfortable guest rooms and suites at moderate rates.

Shaded verandas, quiet gardens and greens, and restful lounges are distinctive features of this delightful hotel.



1. South Wing Bed-Sitting Room
2. South Wing Bed Sitting Room
3. The Williamsburg Lodge and Conference Center
4. The Lodge's Bay Room
5. West Wing of the Lodge



The Lodge Dining Rooms are famous for delicious southern foods at moderate prices and seafood specialties. A garden vista enhances the pleasure of dining at the Lodge.

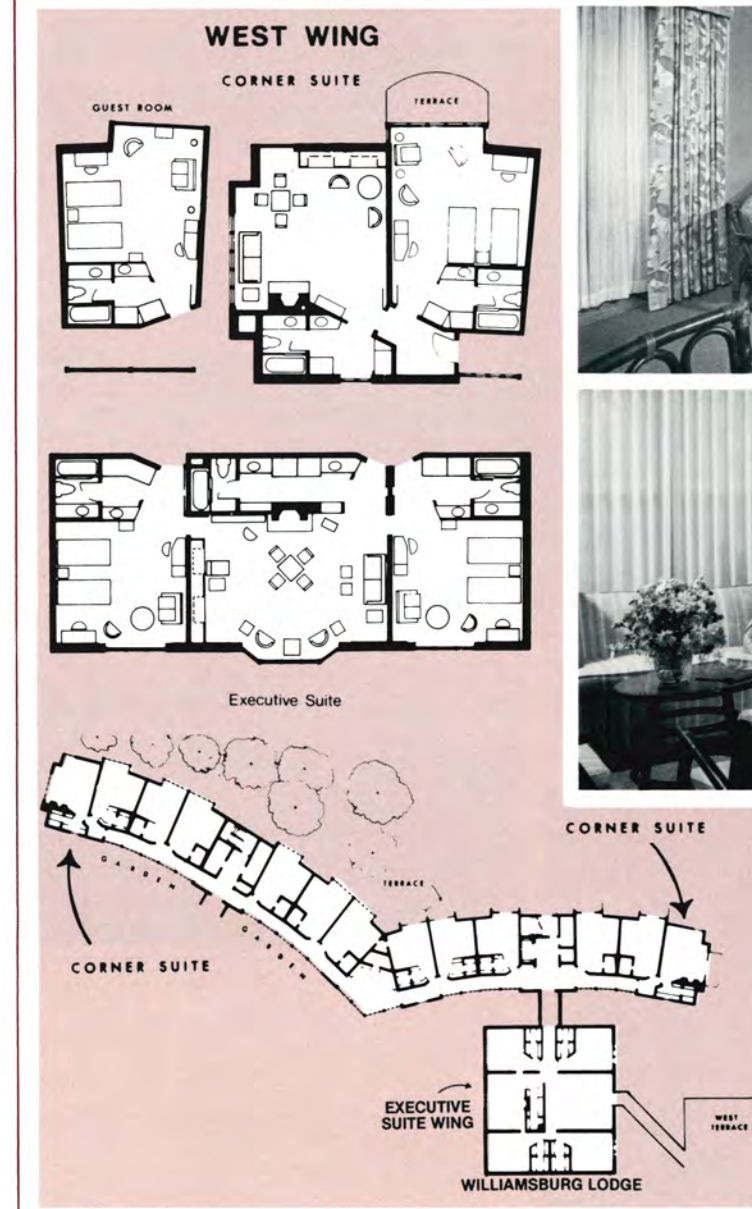
The Garden Lounge serves cocktails and light refreshments, with entertainment most evenings.

Guest facilities of Williamsburg Lodge have been planned with the conference delegate in mind. Executive suites will accommodate up to sixteen persons for a

small conference or will serve as a hospitality room for fifty persons.

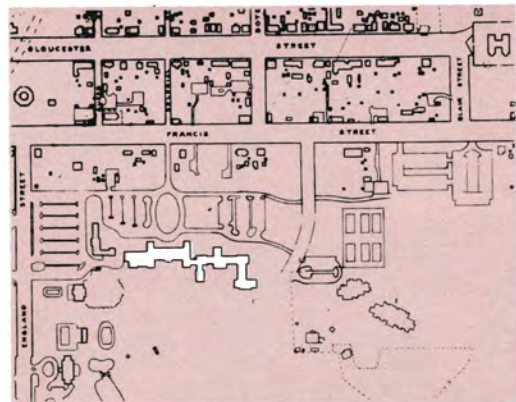
The Lodge shares the recreational facilities of Williamsburg Inn.

The Colonial Williamsburg bus system connects the Lodge and Conference Center with all of Williamsburg's historic buildings and gardens, Williamsburg Inn, The Motor House, the Information Center, Merchants Square, and the colonial taverns.



1. The Garden Lounge
2. A West Wing Parlor
3. West Wing Guest Room
4. South Wing Guest Room

WILLIAMSBURG INN



1. Lobby
2. East Lounge
3. Bedroom
4. Bed-Sitting Room
5. Regency Cocktail Lounge
6. Suite
7. Regency Dining Room



Located less than a block from the Conference Center and on the edge of the Historic Area, the five-star Williamsburg Inn has the atmosphere of a gracious Virginia country estate. Guest rooms overlook long wooded vistas, spacious landscaped grounds, or the Historic Area. Kings, queens, social and political leaders from all over the world have been guests in this distinguished hotel.

Guest rooms and suites numbering 145 meet the increasing demand for luxurious accommodations adjacent to the Historic Area. They are secluded yet near all of the activities in Virginia's colonial capital.

Williamsburg Inn's Colonial Houses add eighty guest rooms for a total room count of 225.

Celebrated food and wines are served in an atmosphere of quiet elegance in the Regency Dining Room. Cocktails are offered in the Regency Lounge.

Craft House and the Abby Aldrich Rockefeller Folk Art Center are immediately adjacent to the Inn.

The Historic Area bus serves Colonial Williamsburg's exhibition buildings, craft shops, and official Information Center as well as the other points of interest.



PROVIDENCE HALL GUEST ROOMS



The Inn's Providence Hall guest rooms and suites, along with three meeting rooms, provide depth and versatility for executive groups in session at Williamsburg Inn.

The Executive Room will seat up to twenty in traditional conference style. It may also be used for receptions and other informal gatherings.

The Director's Room, with 975 square feet, has a specially designed executive conference table with comfortable high-backed swivel chairs and additional lounge seating for small discussion groups.

A maximum of twenty-eight persons can be accommodated in "hollow square" seating in the Committee Room situated on the garden level. Its location, away from the general traffic of this wing, makes it ideal for use as a game room as well.

A gracious lounge is available for receptions or informal gatherings.

1. Providence Hall Wings
2. Williamsburg Inn (left foreground)
Providence Hall Wings (at right)
and the Historic Area

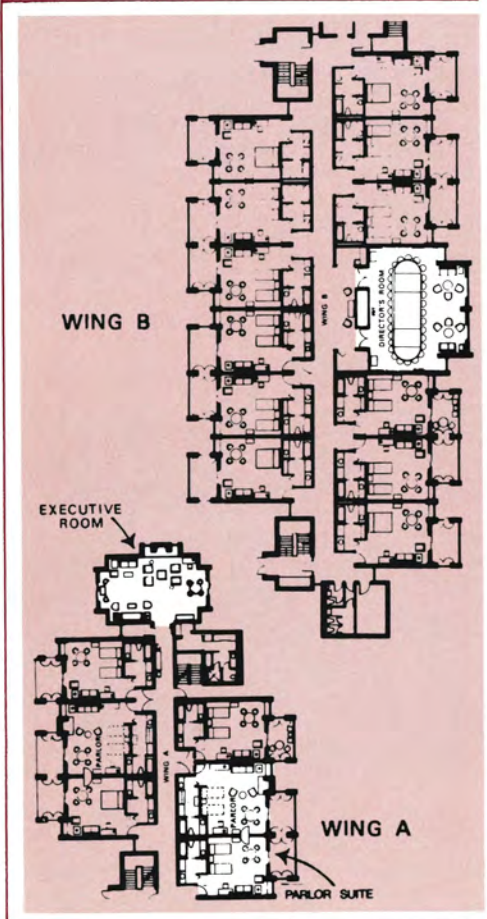


PROVIDENCE HALL	THEATRE	CLASS-ROOM	BANQUET	CONFERENCE	RECEPTION	SIZE IN SQUARE FEET	DIMENSIONS IN FEET
Director's Room				25		975	37x29
Committee Room	50	35		28	60	740	36x20.6
Lounge			30		80	975	37x29
Executive Room				24	40	740	36x20.6

1. Lounge B
2. Directors' Room
3. Executive Room
4. Executive Room



The forty-three guest rooms in the two contemporary Providence Hall wings of Williamsburg Inn are outstanding for their spaciousness and for the richness of their furnishings. Accommodations in the two buildings include deluxe parlor suites, and bed-sitting rooms of generous size. Half face the golf course and the other half the tennis courts. All feature balconies or patios.



COLONIAL HOUSES



In the heart of Williamsburg's Historic Area are a variety of Colonial Houses and "public lodgings" operated by Williamsburg Inn. Within easy walking distance of the Inn, they receive full services from it, and in the Colonial Houses guests enjoy living in the eighteenth-century environment.

Each of the Colonial Houses has its own character and charm. The two largest lodgings are Market Square Tavern (twelve rooms) and Brick House Tavern (sixteen rooms). Others are family houses of one or two stories, and several once served more utilitarian purposes as "office," kitchen, shop, laundry, or other dependency. All of them now offer guests an unusual lodging experience.



THE MOTOR HOUSE



Williamsburg's largest and finest motor hotel, The Motor House has 314 guest rooms of generous size, contemporary furnishings, three swimming pools, a spacious lobby and lounge area — all located in a natural pine grove. Every room has a refreshing view of this natural setting and guests appreciate the atmosphere of seclusion and privacy.

The Cascades Restaurant, the Motor House Cafeteria, and The Cascades Meeting Center, with conference facilities for 200 persons, are on the grounds of the hotel.

Two completely furnished meeting rooms are located in the Motor House main building and will accommodate thirty and twenty persons each, in board-room style.



1. Motor House Administration Building
2. Motor House Lobby
3. Motor House Pool
4. Motor House Exterior
5. Guest Room
6. Registration Desk

THE CASCADES



1. The Cascades
2. Garden Room
3. Cascades Restaurant
4. North Dining Room
5. Cafeteria Interior
6. Corner Room Cocktail Lounge
7. Suite
8. Companion Room
9. Cascades Bedroom
10. Suite
11. Cascades Wing Exterior



The Cascades Restaurant offers convenience and a gracious dining experience to guests of The Motor House. It features specialties from the Chesapeake Bay country as well as worldwide favorites at breakfast, luncheon, and dinner. Cocktails are offered in the Cascades Lounge.

The Cascades Meeting Center offers an assembly area, three meeting-banquet

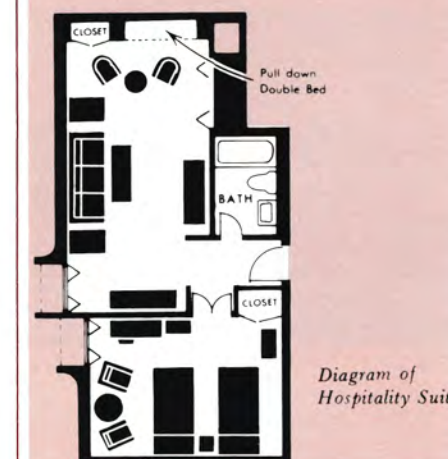
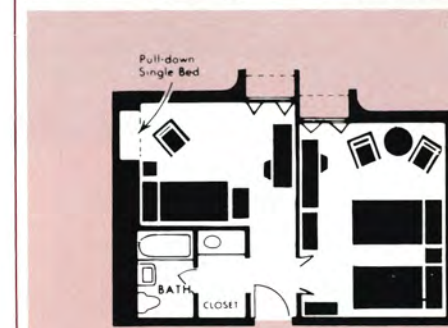
rooms, and a large terrace near the cascading waterfalls.

The ninety-six Cascades Wing guest rooms are connected by a covered walkway and are just a few steps from the Cascades Meeting Center.

Cascades Hospitality Suites — eight in number — may be used for social activities or small discussion groups. Each suite has a large living room with a bar-lavatory and a sleeping room with twin beds.

Two conferees may share a Cascades unit in semi-privacy since the floor plan will permit two sleeping areas, or two occupants may occupy the same sleeping room and use the companion room as a lounge or study area.

The Cafeteria provides quick service and moderate prices.



EIGHTEENTH-CENTURY TAVERNS

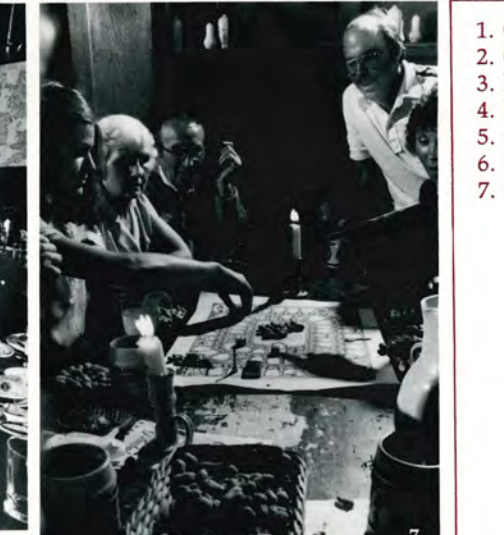
In Williamsburg's three colonial taverns, conferees and their spouses may enjoy a variety of dining experiences as costumed waiters and candlelight recall the graciousness and conviviality of early Virginia hospitality.

King's Arms Tavern on Duke of Gloucester Street features Virginia ham, roast beef, peanut soup, and select wines. Such delicacies were enjoyed in Williamsburg by

Thomas Jefferson and other early Virginians.

Christiana Campbell's Tavern specializes in delicious seafood from the Chesapeake Bay, steak, and fine wines. Campbell's was George Washington's favorite dining place in Williamsburg, and is located just east of the Capitol.

Chowning's Tavern, an informal eighteenth-century alehouse, serves traditional favorites and is well-known for its nightly "gambols," where visitors and townspeople relax in a convivial atmosphere. It is located on Market Square, in the heart of the Historic Area.



1. Campbell's Tavern
2. Chowning's Tavern
3. King's Arms Tavern
4. King's Arms Tavern
5. Campbell's Tavern
6. Chowning's Tavern
7. Gambols

HOW TO REACH WILLIAMSBURG

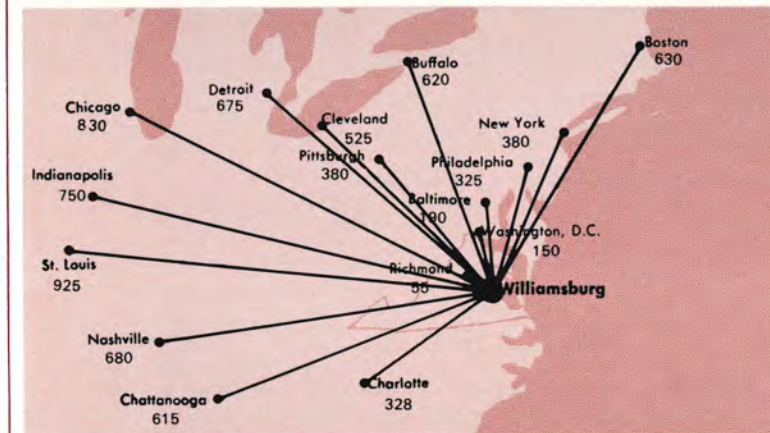
BY AUTOMOBILE: The city of Williamsburg is on Interstate 64, U.S. 60, and Virginia 5 and 31.

BY AIRLINE: Three nearby airports serve Williamsburg. Patrick Henry International Airport at Newport News is 14 miles away. Richmond's Byrd International Airport and Norfolk International Airport are approximately 45 miles from the city. Regular limousine service is available between each airport and Colonial Williamsburg's hotel facilities.

BY PRIVATE PLANE: Patrick Henry Airport at Newport News and Williamsburg-Jamestown Airport, the latter a general aviation facility in the outskirts of the city, have facilities for transient aircraft.

BY BUS: Greyhound Lines provides direct, nationwide service. Trailways serves both Richmond and Norfolk, but connections must be made at these cities via Greyhound for Williamsburg.

BY RAIL: Williamsburg is served by Amtrak from Boston, New York, Philadelphia, Baltimore, Washington, and Richmond with daily service.



MAKING YOUR ARRANGEMENTS

The hotel sales staff of Colonial Williamsburg is prepared to help plan and execute seminar and conference programs. For information on arrangements and services available, please call or write the Director of Hotel Sales, Colonial Williamsburg, Post Office Drawer B, Williamsburg, Virginia 23185. You may dial toll-free 1-800-446-8956 (in Virginia 1-800-582-8976). Our local number is (804) 229-1000.



1. Norfolk International Airport
2. Byrd International Airport
3. Patrick Henry International Airport

CONFERENCE FACILITIES

WILLIAMSBURG LODGE and CONFERENCE CENTER	THEATRE	CLASS- ROOM	BANQUET	CONFER- ENCE	RECEP- TION	SIZE IN SQUARE FEET	DIMEN- SIONS IN FEET
Auditorium	535						
Virginia Room Lower Level	300	200	240		400	3136	56x56
Lower Level and Perimeter	650	350	520		800	7744	88x88
Combined with Room B	850		700		1300	9078	
Room A or C	55	35	48	26	50	630	21x30
Room B	130	90	100	50	120	1305	45x29
Combined A and B	185	125	148	70	170	1935	66x30
Combined B and C	185	125	148	70	170	1935	66x30
Combined A, B, and C	240	160	200	85	220	2565	87x30
Room D, E, or F	50	30	40	25	45	594	27x22
Combined D and E	100	60	80	50	90	1188	44x27
Combined E and F	100	60	80	50	90	1188	44x27
Combined D, E, and F	150	90	120	75	135	1782	66x27
North Gallery					400	1920	80x24
East Gallery					200	2352	84x28
West Terrace-Loggia			250		500	5104	88x58
Tidewater Room	260	185	220	80	300	3476	79x44
North Ballroom	350	220	310	70	475	3888	72x54
Room H			10	10	10	234	18x13
PROVIDENCE HALL							
Director's Room				25		975	37x29
Committee Room	50	35		28	60	740	36x20.6
Lounge			30		80	975	37x29
Executive Room				24	40	740	36x20.6

AUDIOVISUAL, MEETING AND BANQUET ROOM EQUIPMENT

AUDIOVISUAL EQUIPMENT

Microphones 150-250 ohms impedance

- 10 Electro-Voice lavalier
- 30 Electro-Voice 635-A-LO-Z
- 3 Electro-Voice 649B, lavalier
- 3 Electro-Voice 664, PA with switch
- 6 Electro-Voice 513, 100-cycle cut-off filters
- 4 Wireless

Microphone Stands

- 10 floor stands
- 30 table stands
- 2 banquet stands

Microphone Mixers

- 1 six-channel built in, Virginia Room control booth
- 2 four-channel Altec 1567A portable remote amplifier mixers
- 2 five-channel Altec 1592 portable remote amplifier mixers

Portable PA Systems

- 1 two-speaker 30-watt with microphone (high impedance)
- 1 four-channel RCA 74-watt for low impedance mics
- 1 two-channel RCA-74 watt for low impedance mics

Tape Recorders

- 2 cassette tape recorders
- 3 Wollensak-3M New Model 3.75 and 7.5 ips record and playback
- 4 long play Crown rack mounted tape recorder and playback machine. (Will take any regular size reel to 10½ maximum.) 3.75 and 7.5 and 15 ips full track
- 2 stereo Sony tape recorders

Phonographs

- 1 KLH Model 11 transistorized stereo portable 20 watts. 33-45-78 rpm and record changers
- 1 Channelmaster stereo turntable 16-33-45-78 rpm; 7-10-12-16 inch single records

Tape

- In stock at Conference Center; magnetic recording long-play, 7-inch reels ¼" Scotch Brand No. 150, 1800 feet
- Cassette Tapes C90 and C120

Pointers

- 3 Edna-lite electric pointers—110 volt, AC operated
- 4 battery pointers

Portable Projectors

- 1 DuKane Micromatic sound 35mm slide film with phonograph turntable
- 3 2x2 slide Prado by Leitz with long lenses, 750 watt

- 6 2x2 Kodak Carousel automatic, 500 watt (holds 80 and 140 slides)

- 2 Kodak Carousel with Xenon lamp house
- 1 Kodak dissolve control, model #1
- 2 3¼x4 slide Spencer by American Optical 750 watt (can alternate 2x2 slides)
- 4 overhead transparency Vu-Graph, 1000 watt (10x10 transparency)
- 2 opaque (printed page) projectors, 1000 watt

- 1 overhead transparency Opascope, 1000 watt, with drum
- 2 Bell & Howell 1963 self-threading 16mm sound motion picture projectors
- 3 Eastman Pageant 16mm movie sound projectors (portable) each with optical sound. One of these with magnetic sound in addition.

- 1 Super 8mm movie projector (silent) 400-ft. reel

Fixed Projectors — Virginia Room

- 1 Eastman Model 25 16mm sound motion picture projector with Xetron light source
- 1 Century Model R3B 35mm sound motion picture projector with Xetron light source
- 2 Xenon Trouper arc 2x2, 2¼x2¼, 2¾x2¾, 3¼x4 slides, 3¼x3¼

Fixed Projectors — Auditorium

- 1 Eastman Model 40 16mm sound motion picture projector with Xenon light source
- 2 Century 35-70mm sound motion picture projector Xenon lamp source
- 1 Xenon Trouper arc 2x2, 2¼x2¼, 2¾x2¾, 3¼x4 slides, 3¼x3¼

Portable Projection Screens — all

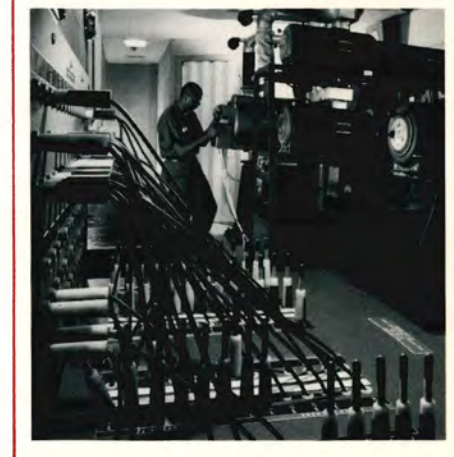
- white matte finish
- 10 70"x70" Da-Lite
- 1 7x9 Rear View
- 1 120"x120" Da-Lite
- 1 96"x96" Da-Lite
- 2 70"x70" Silver Screens

Fixed Projection Screens

- 1 10'x12' roll-down remote control (Virginia Room west wall)
- 1 14'x20' roll-down remote control (Virginia Room west wall)
- 1 10'x10' roll-down remote control (Tidewater Room)
- 1 20'x20' roll-down remote control (Auditorium)
- 1 21'x38' fixed screen (Auditorium)

Spot Lights

- 1 portable Stron Trouperette travel spot (1000 watt) with 6 glass color filters
- 1 portable 2100 watt travel spot



Transparency Equipment

- Xerox copy machine

Video Tape Deck

- Sony ¾" Video Tape Deck and Monitor

MEETING AND BANQUET ROOM EQUIPMENT

- Platforms—3 x 6 x 8 and 24
- Easels
- Flip charts
- Magnetic chalkboards
- Cork boards
- Table lecterns
- Stand-up lecterns
- Bulletin boards
- United States flags
- Virginia flag
- Standard typewriters
- Bulletin typewriters
- Also: Gavels
- Pointers
- Pads; pencils, etc.
- Tables: 72" x 36" x 30" high
- 72" x 18" x 30" high
- 72" diameter, 30" high
- 60" diameter, 30" high

CEILING HEIGHTS

VIRGINIA ROOM
Perimeters—14½ ft.
Well—16½ ft.
ROOMS A, B, and C—11½ ft.
ROOMS D, E, and F—9 ft. at edge
9 ft. 10 in. at center
NORTH BALLROOM—12 ft.
TIDEWATER ROOM—11 ft. in center
10 ft. at sides

482 Fixed Seats
48 Movable Seats
530 Total

Microphone Locations

PROJECTION BOOTH
OVERHANG

AUDITORIUM
FOYER

WEST GALLERY

COVERED LOGGIA

**THE
COLONIAL WILLIAMSBURG
CONFERENCE CENTER**

